

Ultra-thin UHF Contactless Inlay

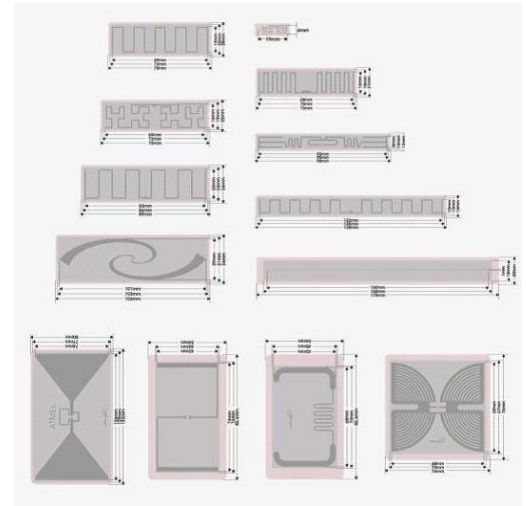
Overview

We offer a wide range of Ultra High Frequency inlays operating at a frequency which goes from 850 to 960 MHz, as the core part of ISO Standard Contactless Cards production.

The Ultra High Frequency band UHF is characterized by high data transfer rates and long read range amounting to several meters (up to a maximum of 6 meters depending on the environmental conditions and the reader).

To meet the market demand, **Asia Tech** adopts the advanced technique of etching antenna combined with flip-chip bonding, with the aim to provide to Our customers the best products available on the market.

We can supply Dry Inlay and Wet Inlay with different layouts and formats (round, rectangle, square, etc.) along with different dimension, in order to allow any card manufacturer to produce ultra-thin cards, Labels and tags in a very easy and efficient way.



Application

The UHF Prelams are suitable for various fields of application: automated fare collection (e.g. on highway), asset tracking, baggage handling, industry & manufacturing, inventory management, logistics, supply chain management and many others.

Main Advantages (Compared with other traditional manufacturing techniques)

- Ultra-thin Inlay with thickness of 0.30mm, suitable for making ultra-flat & ultra-thin cards (less than 0.5mm)
- Chip position is hard to be found in finished cards, hence avoid the damage by human factors
- Excellent and stable electronic performance; High consistency in frequency
- Better printing effect on finished cards, which regardless of IC position
- Better resistance to bending and distortion



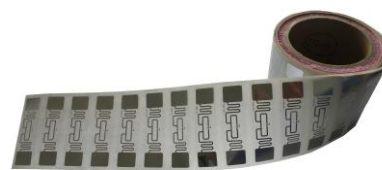
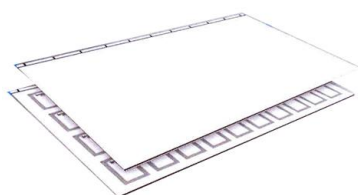
- Better quality at a lower cost

General Specification for Ultra-Thin Inlay

Available IC	<ul style="list-style-type: none"> ◆ Impinj Monza Series, NXP, Atmel, EPC Class 1 - Gen-2, etc. ◆ IC format: Au-bumped wafer, Module(MOA2, MOA4)
Support Protocol	ISO18000-6B/C, EPC etc
Delivery Format	Sheet Inlay, Dry/Wet Inlay, Final Card/Tag
Inlay Format	2*5, 3*7, 3*8, 4*8, 5*5, etc.
Production Material	PVC, PETG, TESLIN etc.
Antenna Size	Accordingly with customer requirement (75x46, 40x40, etc.)
Antenna Material	Aluminum etching antenna.
Maximum Dimension	L: 510±5mm W: 410±5mm for Pre-Laminated Inlay
Thickness	◆ HF: 0.30±0.02mm for Sheet Inlay
Operation Temperature	-25°C ~ +65°C
Weight	Around 3gr per Pre-laminated Sheet Inlay, depends on thickness

Delivery Format:

- Sheet
- Roll
- Card & Label



Quality Guarantee

- The 100% of Our products are tested (dimension, visual inspection, functionality);
- The Product Specification will be confirmed by the client before mass production, or in accordance to the samples if provided, in order to comply always with the requirements;



- We use a solid packaging in order to prevent damages during the shipping stage.