

Combi Prelam

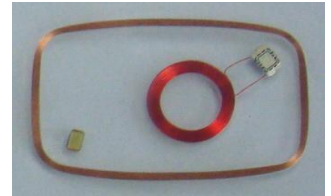
Overview

Our Combi prelam, are suitable for the production of ISO standard Combi Cards, that are combining within one card more than one technology.

Thanks to Our Technological Parters, Our raw material suppliers and Our internal Test Lab, the quality of our prelam is stable, durable and any time we can tune the products in order to reach the best reading/writing performance.

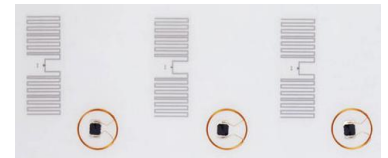
We can customize the prelam accordingly with your requirements including different technologies on the same prelam:

- LF chip / HF chip;
- LF Chip / UHF Chip;
- HF Chip / UHF Chip.



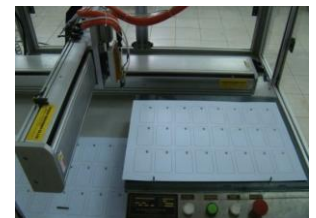
Applications

The Combi Prelam are suitable to follow complex projects in a very easy and efficient way, providing in one item / one card the possibility to manage different applications, such us: Access Control, vending machine, Public Transportation, etc.



Main Advantages

- All products are produced with first in class machines using mature and reliable technologies;
- Support mass production as well as trial project, ensuring always a very fast delivery time;
- Competitive price for high quality product and fast support.



General Specification

Available IC	♦ EM4100/4102, EM4200, T5577, Hitag, NXP Mifare Ultralight, 1K/4K, PLUS/DESFire family including 4&7 bytes UID, ICODE family, Impinj Monza Series, EPC Class 1 - Gen-2, etc.
Support Protocol	ISO 14443 Type A & TypeB, ISO 15693, ISO18000-6B/C, EPC etc
Delivery Format	Pre-laminated Sheet Inlay, Finished Card/Tag
Inlay Format	2*5, 3*7, 3*8, 4*8, 5*5, etc.
Material	PVC, PETG, TESLIN etc.
Antenna Shape	Round , Oval, detailed shape designed according to card/inlay size
Antenna Material	Copper Coil
Maximum Dimension	L: 510±5mm W: 410±5mm for Pre-Laminated Inlay
Thickness	0.5+0.04mm for Pre-laminated Inlay
Operation Temperature	-20°C ~ +70°C
Weight	Around 4gr per Pre-laminated Sheet Inlay, depends on thickness

Quality Guarantee

- The 100% of Our products are tested (dimension, visual inspection and functionality);
- The Product Specification will be confirmed by the client before mass production, or in accordance to the samples if provided, in order to comply always with the requirements;
- We use a solid packaging in order to prevent damages during the shipping stage.

