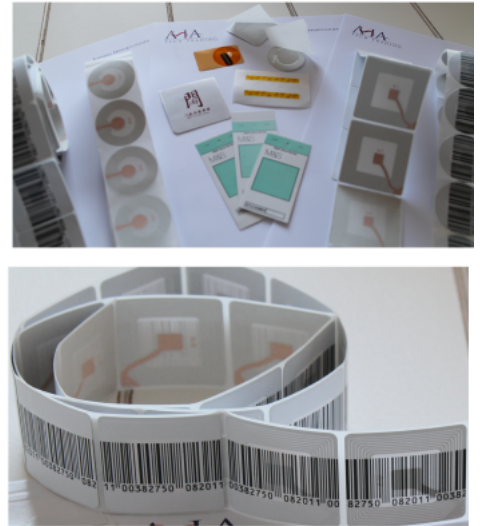


Electronic Article Surveillance (EAS) Tags

Overview

The EAS Technology has become popular and largely used within the retail stores in order to prevent theft of products and articles from the shops.

ASIA Tech has developed a full range of EAS Labels and Tags that are extremely efficient, cost effecting, with high quality and that can be tuned accordingly with the requested frequency 8.2Mhz - 1.95Mhz - 58Mhz, etc.



Application

Largely used within the retail stores.



Main Advantages

- We are able to tune Our Eas Label and Tags accordingly with Your needs;
- We have a wide product range including special products tamper evident;
- Our labels and tags are suitable for the food industry;
- Support mass production as well as trial project, ensuring always a very fast delivery time;
- Competitive price for first in class products.

Quality Guarantee

- The 100% of Our products are tested (dimension, visual inspection and functionality);
- The Product Specification will be confirmed by the client before mass production, or in accordance to the samples if provided, in order to comply always with the requirements;
- We use a solid packaging in order to prevent damages during shipment.

RF System Antennas



Model No.	ATT-501
Operating Voltage	AC (50~60)110~220 V
Rated Power	≤ 15w
Center Frequency	8.2 Mhz/ 10 Mhz
Scanning Frequency	180/170/160/150Hz
Working mode	Tx + Rx
Detection range	0.9 - 2M (Depend on tag)
Main Material	Alumium Alloy
Appearance size	1540*430*60mm
Packing size	1560*450*150mm
Packing unit	2pcs/ctn
Packing G.W.	15kgs/ctn



Model No.	ATT-502
Operating Voltage	AC (50~60)110~220 V
Rated Power	≤ 15w
Center Frequency	8.2 Mhz/ 10 Mhz
Scanning Frequency	180/170/160/150Hz
Working mode	Tx + Rx
Detection range	0.9 - 2M (Depend on tag)
Main Material	Stainless Steel
Appearance size	1650*340*25mm
Packing size	1680*350*140mm
Packing unit	2pcs/ctn
Packing G.W.	15kgs/ctn



Model No.	ATT-503
Operating Voltage	AC (50~60)110~220 V
Rated Power	≤ 15w
Center Frequency	8.2 Mhz/ 10 Mhz
Scanning Frequency	180/170/160/150Hz
Working mode	Tx + Rx
Detection range	0.9 - 2M (Depend on tag)
Main Material	Alluminem Alloy
Appearance size	1550*360*35mm
Packing size	1580*380*130mm
Packing unit	2pcs/ctn
Packing G.W.	12kgs/ctn



Model No.	ATT-504
Operating Voltage	AC (50~60)110~220 V
Rated Power	≤ 15w
Center Frequency	8.2 Mhz/ 10 Mhz
Scanning Frequency	180/170/160/150Hz
Working mode	Tx + Rx
Detection range	0.9 - 2M (Depend on tag)
Main Material	ABS plastic
Appearance size	1610*340*45mm
Packing size	1640*375*220mm
Packing unit	2pcs/ctn
Packing G.W.	16kgs/ctn



Model No.	ATT-505
Operating Voltage	AC (50~60)110~220 V
Rated Power	≤ 15w
Center Frequency	8.2 Mhz/ 10 Mhz
Scanning Frequency	180/170/160/150Hz
Working mode	Tx + Rx
Detection range	0.9 - 2M (Depend on tag)
Main Material	Alumium Alloy
Appearance size	1520*400*40mm
Packing size	1560*440*120mm
Packing unit	2pcs/ctn
Packing G.W.	18kgs/ctn



Model No.	ATT-506
Operating Voltage	AC (50~60)110~220 V
Rated Power	≤ 15w
Center Frequency	8.2 Mhz/ 10 Mhz
Scanning Frequency	180/170/160/150Hz
Working mode	Tx + Rx
Detection range	0.9 - 2M (Depend on tag)
Main Material	Stainless Steel
Appearance size	1580*380*30mm
Packing size	1610*420*195mm
Packing unit	2pcs/ctn
Packing G.W.	15kgs/ctn



Model No.	ATT-508
Operating Voltage	AC (50~60)110~220 V
Rated Power	≤ 15w
Center Frequency	8.2 Mhz/ 10 Mhz
Scanning Frequency	180/170/160/150Hz
Working mode	Tx + Rx
Detection range	0.9 - 2M (Depend on tag)
Main Material	Alluminum Alloy
Appearance size	1520*400*40mm
Packing size	1560*450*150mm
Packing unit	2pcs/ctn
Packing G.W.	15kgs/ctn



Model No.	ATT-514
Operating Voltage	AC (50~60)110~220 V
Rated Power	≤ 15w
Center Frequency	8.2 Mhz/ 10 Mhz
Scanning Frequency	180/170/160/150Hz
Working mode	Tx + Rx
Detection range	0.9 - 2M (Depend on tag)
Main Material	Alluminum Alloy
Appearance size	1570*435*40mm
Packing size	1600*450*90mm
Packing unit	2pcs/ctn
Packing G.W.	15kgs/ctn



Model No.	ATT-509
Operating Voltage	AC (50~60)110~220 V
Rated Power	≤ 15w
Center Frequency	8.2 Mhz/ 10 Mhz
Scanning Frequency	180/170/160/150Hz
Working mode	Tx + Rx
Detection range	0.9 - 2M (Depend on tag)
Main Material	Alluminum Alloy
Appearance size	1540*400*40mm
Packing size	1560*440*120mm
Packing unit	2pcs/ctn
Packing G.W.	15kgs/ctn



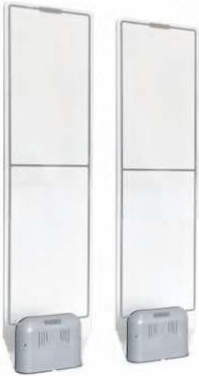
Model No.	ATT-510
Operating Voltage	AC (50~60)110~220 V
Rated Power	≤ 15w
Center Frequency	8.2 Mhz/ 10 Mhz
Scanning Frequency	180/170/160/150Hz
Working mode	Tx + Rx
Detection range	0.9 - 2M (Depend on tag)
Main Material	Alluminum Alloy
Appearance size	1520*440*40mm
Packing size	1560*480*120mm
Packing unit	2pcs/ctn
Packing G.W.	15kgs/ctn



Model No.	ATT-515
Operating Voltage	AC (50~60)110~220 V
Rated Power	≤ 15w
Center Frequency	8.2 Mhz/ 10 Mhz
Scanning Frequency	180/170/160/150Hz
Working mode	Tx + Rx
Detection range	0.9 - 2M (Depend on tag)
Main Material	Alluminum Alloy
Appearance size	1540*400*40mm
Packing size	1560*450*90mm
Packing unit	2pcs/ctn
Packing G.W.	15kgs/ctn



Model No.	ATT-516
Operating Voltage	AC (50~60)110~220 V
Rated Power	≤ 15w
Center Frequency	8.2 Mhz/ 10 Mhz
Scanning Frequency	180/170/160/150Hz
Working mode	Tx + Rx
Detection range	0.9 - 2M (Depend on tag)
Main Material	Acrylic
Appearance size	1600*400*20mm
Packing size	1660*475*150mm
Packing unit	1pcs/ctn
Packing G.W.	24kgs/ctn



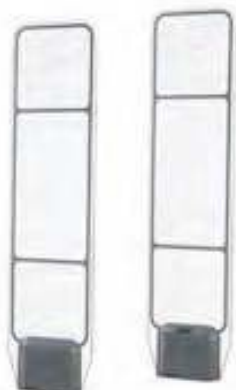
Model No.	ATT-517
Operating Voltage	AC (50~60)110~220 V
Rated Power	≤ 15w
Center Frequency	8.2 Mhz/ 10 Mhz
Scanning Frequency	180/170/160/150Hz
Working mode	Tx + Rx
Detection range	0.9 - 2M (Depend on tag)
Main Material	Acrylic
Appearance size	1600*400*20mm
Packing size	1660*475*150mm
Packing unit	1pcs/ctn
Packing G.W.	24kgs/ctn



Model No.	ATT-521
Operating Voltage	AC (50~60)110~220 V
Rated Power	≤ 15w
Center Frequency	8.2 Mhz/ 10 Mhz
Scanning Frequency	180/170/160/150Hz
Working mode	Tx + Rx
Detection range	0.9 - 2M (Depend on tag)
Main Material	Aluminum Alloy
Appearance size	1535*500*60mm
Packing size	1570*495*150mm
Packing unit	1pcs/ctn
Packing G.W.	15kgs/ctn



Model No.	ATT-518
Operating Voltage	AC (50~60)110~220 V
Rated Power	≤ 15w
Center Frequency	8.2 Mhz/ 10 Mhz
Scanning Frequency	180/170/160/150Hz
Working mode	Tx + Rx
Detection range	0.9 - 2M (Depend on tag)
Main Material	Acrylic
Appearance size	1520*200*20mm
Packing size	1535*265*155mm
Packing unit	1pcs/ctn
Packing G.W.	12,5 kgs/ctn



Model No.	ATT-520
Operating Voltage	AC (50~60)110~220 V
Rated Power	≤ 15w
Center Frequency	8.2 Mhz/ 10 Mhz
Scanning Frequency	180/170/160/150Hz
Working mode	Tx + Rx
Detection range	0.9 - 2M (Depend on tag)
Main Material	Acrylic
Appearance size	1600*400*20mm
Packing size	1660*475*150mm
Packing unit	1pcs/ctn
Packing G.W.	24 kgs/ctn



Model No.	ATT-522
Operating Voltage	AC (50~60)110~220 V
Rated Power	≤ 15w
Center Frequency	8.2 Mhz/ 10 Mhz
Scanning Frequency	180/170/160/150Hz
Working mode	Tx + Rx
Detection range	0.9 - 2M (Depend on tag)
Main Material	Acrylic
Appearance size	1580*380*22mm
Packing size	1660*475*150mm
Packing unit	1pcs/ctn
Packing G.W.	24 kgs/ctn



Model No.	ATT-523
Operating Voltage	AC (50~60)110~220 V
Rated Power	≤ 15w
Center Frequency	8.2 Mhz/ 10 Mhz
Scanning Frequency	180/170/160/150Hz
Working mode	Tx + Rx
Detection range	0.9 - 2M (Depend on tag)
Main Material	Acrylic
Appearance size	1600*400*20mm
Packing size	1660*475*150mm
Packing unit	1pcs/ctn
Packing G.W.	24 kgs/ctn

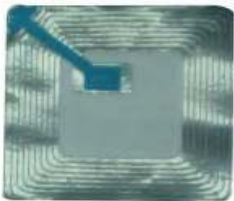
RF Soft Labels



Model No.	ATT-303
Frequency	8.2 Mhz
Color	Black/ white/ barcode or customized
Material	Paper + Glue + Aluminus Foil
Dimension	30x30mm
Packing	1000 pcs/roll -20 rolls/ctn
Ctn Size	37*27.5*19.5 cm
G. W.	11 Kg/ctn



Model No.	ATT-304
Frequency	8.2 Mhz
Color	Black/ white/ barcode or customize
Material	Paper + Glue + Aluminus Foil
Dimension	30x40mm
Packing	1000 pcs/roll -20 rolls/ctn
Ctn Size	37*27.5*19.5 cm
G. W.	11.2 Kg/ctn



Model No.	ATT-L404
Frequency	8.2 Mhz
Color	Black/ white/ barcode or customize
Material	Paper + Glue + Aluminus Foil
Dimension	40x40mm
Packing	1000 pcs/roll -20 rolls/ctn
Ctn Size	47*32.5*17.5 cm
G. W.	11.2 Kg/ctn



Model No.	ATT-L505
Frequency	8.2 Mhz
Color	Black/ white/ barcode or customize
Material	Paper + Glue + Aluminus Foil
Dimension	50x50mm
Packing	1000 pcs/roll -20 rolls/ctn
Ctn Size	54*34.5*18.5 cm
G. W.	18.2 Kg/ctn



Model No.	ATT-JA404
Frequency	8.2 Mhz
Color	Black/white/barcode or customize
Material	Paper + Glue + Aluminus Foil
Dimension	40x40mm
Packing	1000 pcs/roll -20 rolls/ctn
Ctn Size	37*27.5*19.5 cm
G. W.	11.2 Kg/ctn



Model No.	ATT-L6520
Frequency	8.2 Mhz
Color	Red/white or customize
Material	Paper + Glue + Aluminus Foil
Dimension	65x20mm
Packing	1000 pcs/roll -20 rolls/ctn
Ctn Size	47*32.5*17.5 cm
G. W.	14 Kg/ctn

RF Hard Tags



Model No.	ATT-OS 303
Frequency	8.2 Mhz
Color	Black/ white/ barcode or customize
Material	Paper + Glue + Aluminus Foil
Dimension	30x30mm
Packing	500 pcs/roll -20 rolls/ctn
Ctn Size	30*30*24 cm
G. W.	11 Kg/ctn




Model No.	ATT-OS 304
Frequency	8.2 Mhz
Color	Black/ white/ barcode or customize
Material	Paper + Glue + Aluminus Foil
Dimension	50x50mm
Packing	500 pcs/roll -20 rolls/ctn
Ctn Size	30*30*24 cm
G. W.	12.2 Kg/ctn




Model No.	ATT-HT01
Frequency	8.2 Mhz
Color	Black/ white/ Grey or customize
Lock	Balls Clutch, Standard super
Dimension	48x42mm
Packing	1000 pcs/ Ctn
Ctn Size	55*40*13 cm
G. W.	9.8 Kg/ctn




Model No.	ATT-HT02
Frequency	8.2 Mhz
Color	Black/ white/ Grey or customize
Lock	Balls Clutch, Standard super
Dimension	68x55mm
Packing	1000 pcs/ Ctn
Ctn Size	50*35*30 cm
G. W.	16.5 Kg/ctn




Model No.	ATT-HT03
Frequency	8.2 Mhz
Color	Black/ white/Grey or customize
Lock	Balls Clutch, Standard super
Dimension	∅ 42mm
Packing	1000 pcs/Ctn
Ctn Size	40*30*22 cm
G. W.	10.5 Kg/ctn



Model No.	ATT-HT04
Frequency	8.2 Mhz
Color	Black/ white/Grey or customize
Lock	Balls Clutch, Standard super
Dimension	∅ 48mm
Packing	1000 pcs/Ctn
Ctn Size	40*32*24 cm



Model No.	ATT-HT05
Frequency	8.2 Mhz
Color	Black/ white/Grey or customize
Material	ABS Plastic + coil
Lock	Balls Clutch, Standard super
Dimension	∅ 50mm
Packing	1000 pcs/Ctn
Ctn Size	40*30*29 cm
G. W.	12.4 Kg/ctn



Model No.	ATT-HT06
Frequency	8.2 Mhz
Color	Black/ white/Grey or customize
Material	ABS Plastic + coil
Lock	Balls Clutch, Standard super
Dimension	∅ 45mm
Packing	1000 pcs/Ctn
Ctn Size	40*30*24 cm
G. W.	12.5 Kg/ctn



Model No.	ATT-HT07
Frequency	8.2 Mhz
Color	Black/ white/Grey or customize
Material	ABS Plastic + coil
Lock	Balls Clutch, Standard super
Dimension	∅ 40mm
Packing	1000 pcs/Ctn
Ctn Size	40*30*24 cm
G. W.	12.5 Kg/ctn



Model No.	ATT-HT08
Frequency	8.2 Mhz
Color	Black/ white/Grey or customize
Material	ABS Plastic + coil
Lock	Balls Clutch, Standard super
Dimension	∅ 50mm
Packing	500 pcs/Ctn
Ctn Size	46*31*23 cm
G. W.	8.5 Kg/ctn



Model No.	ATT-HT09
Frequency	8.2 Mhz
Color	Black/ white/Grey or customize
Lanyard	48 cm or customize
Lock	Balls Clutch, Standard super
Dimension	∅ 50mm
Packing	500 pcs/Ctn
Ctn Size	50*35*30 cm
G. W.	16.5 Kg/ctn



Model No.	ATT-HT10
Frequency	8.2 Mhz
Color	Black/ white/Grey or customize
Material	ABS Plastic + coil
Lock	Balls Clutch, Standard super
Lanyard	10 cm or customize
Packing	1000 pcs/Ctn
Ctn Size	47*32*20 cm
G. W.	9 Kg/ctn



Model No.	ATT-HT11
Frequency	8.2 Mhz
Color	Black/ white/Grey or customize
Lanyard Lenght	20 cm or customize
Lock	Balls Clutch, Standard super
Dimension	50 mm
Packing	500 pcs/Ctn
Ctn Size	48*32*33 cm
G. W.	12.5 Kg/ctn

AM System Antennas



Model No.	ATT-AM01
Operating Voltage	110~230V 50~60 HZ
Rated Power	≤ 15w
Center Frequency	58 Khz
Working mode	MONO
Detection range	0.9 - 2.4 M (Depend on tag)
Main Material	ABS Plastic
Appearance size	1470*400*53mm
Packing size	1540*490*280mm
Packing unit	1pcs/ctn
Packing G.W.	7kgs/ctn



Model No.	ATT-AM02
Operating Voltage	110~230V 50~60 HZ
Rated Power	≤ 15w
Center Frequency	58 Khz
Working mode	TX+RX
Detection range	0.9 - 2.4 M (Depend on tag)
Main Material	ABS Plastic
Appearance size	1470*400*53mm
Packing size	1540*490*280mm
Packing unit	1pcs/ctn
Packing G.W.	7kgs/ctn



Model No.	ATT-AM03
Operating Voltage	110~230V 50~60 HZ
Rated Power	≤ 15w
Center Frequency	58 Khz
Working mode	TX+RX or MONO
Detection range	0.9 - 2.4 M (Depend on tag)
Main Material	ABS Plastic
Appearance size	1390*350*140mm
Packing size	1500*450*190mm
Packing unit	1pcs/ctn
Packing G.W.	Master 16kg , Slave 14Kg/ctn



Model No.	ATT-AM03
Operating Voltage	110~230V 50~60 HZ
Rated Power	≤ 15w
Center Frequency	58 Khz
Working mode	TX+RX or MONO
Detection range	0.9 - 2.4 M (Depend on tag)
Main Material	Acrylic
Appearance size	1550*360*35mm
Packing size	1660*475*150mm
Packing unit	1pcs/ctn
Packing G.W.	24Kg/ctn



Model No.	ATT-AM04
Operating Voltage	110~230V 50~60 HZ
Rated Power	≤ 15w
Center Frequency	58 Khz
Working mode	TX+RX or MONO
Detection range	0.9 - 2.4 M (Depend on tag)
Main Material	Acrylic
Appearance size	1580*430*130 mm
Packing size	1640*530*220mm
Packing unit	1pcs/ctn
Packing G.W.	24Kg/ctn



Model No.	ATT-AM05
Operating Voltage	110~230V 50~60 HZ
Rated Power	≤ 15w
Center Frequency	58 Khz
Working mode	TX+RX or MONO
Detection range	0.9 - 2.4 M (Depend on tag)
Main Material	Acrylic
Appearance size	1580*430*130 mm
Packing size	1640*530*220mm
Packing unit	1pcs/ctn
Packing G.W.	24Kg/ctn



Model No.	ATT-AM06
Operating Voltage	110~230V 50~60 HZ
Rated Power	≤ 15w
Center Frequency	58 Khz
Working mode	TX+RX or MONO
Detection range	0.9 - 2.4 M (Depend on tag)
Main Material	Acrylic
Appearance size	1550*350*35 mm
Packing size	1660*475*150mm
Packing unit	1pcs/ctn
Packing G.W.	14Kg/ctn



Model No.	ATT-AM07
Operating Voltage	110~230V 50~60 HZ
Rated Power	≤ 15w
Center Frequency	58 Khz
Working mode	TX+RX or MONO
Detection range	0.9 - 2.4 M (Depend on tag)
Main Material	Acrylic
Appearance size	1600*430*140 mm
Packing size	1640*530*210mm
Packing unit	1pcs/ctn
Packing G.W.	14Kg/ctn

AM Soft Lables



Model No.	ATT-AMSL01
Frequency	58 Khz
Color	White
Material	PVC+Chip
Dimension	45x11 mm
Packing	5000pcs/box, 5boxes/ctn
Ctn Size	58.5x29.5x22 cm



Model No.	ATT-AMSL02
Frequency	58 Khz
Color	Barcode
Material	PVC+Chip
Dimension	45x11 mm
Packing	5000pcs/box, 5boxes/ctn
Ctn Size	58.5x29.5x22 cm
G.W.	14kgs/ctn



Model No.	ATT-AMSL03
Frequency	58 Khz
Color	Black
Material	PVC+Chip
Dimension	45x11 mm
Packing	5000pcs/box, 5boxes/ctn
Ctn Size	58.5x29.5x22 cm
G.W.	14kgs/ctn

AM Hard Tags



Model No.	ATT-AMHT01
Frequency	8.2 Khz / 58 Khz
Color	Black/ white/Grey or customize
Material	ABS plastic + Magnets stick
Lock	Balls Clutch, Standard super
Dimension	46x13mm
Packing	1000 pcs/Ctn
Ctn Size	40*30*13 cm
G. W.	11 Kg/ctn



Model No.	ATT-AMHT02
Frequency	8.2 Khz / 58 Khz
Color	Black/ white/Grey or customize
Material	ABS plastic + Magnets stick
Lock	Balls Clutch, Standard super
Dimension	51x13mm
Packing	1000 pcs/Ctn
Ctn Size	40*30*14 cm
G. W.	12 Kg/ctn



Model No.	ATT-AMHT03
Frequency	8.2 Khz / 58 Khz
Color	Black/ white/Grey or customize
Material	ABS plastic + Magnets stick
Lock	Balls Clutch, Standard super
Dimension	53x16mm
Packing	1000 pcs/Ctn
Ctn Size	40*30*14 cm
G. W.	12 Kg/ctn



Model No.	ATT-AMHT04
Frequency	8.2 Khz / 58 Khz
Color	Black/ white/Grey or customize
Material	ABS plastic + Magnets stick
Lock	Balls Clutch, Standard super
Dimension	62x15mm
Packing	1000 pcs/Ctn
Ctn Size	40*30*24 cm
G. W.	16 Kg/ctn



Model No.	ATT-AMHT08
Frequency	58 Khz
Color	Black/ white/Grey or customize
Material	ABS plastic + Chip/Magnetic strip
Lock	Spring types
Dimension	84*29.5*19mm
Packing	1000 pcs/Ctn
Ctn Size	45*30*30 cm
G. W.	15 Kg/ctn



Model No.	ATT-AMHT09
Frequency	58 Khz
Color	Black/ white/Grey or customize
Material	ABS plastic + Chip/Magnetic strip
Lock	Spring types
Dimension	88*30.5*18.8mm
Packing	1000 pcs/Ctn
Ctn Size	45*35*30 cm
G. W.	14/18 Kg/ctn



Model No.	ATT-AMHT11
Frequency	8.2 Mhz/58 Khz
Color	Black/ white/Grey or customize
Material	ABS plastic + Magnetic strip
Lock	Three balls clutch, standard super
Dimension	32mmx31mm
Packing	1000 pcs/Ctn
Ctn Size	45*30*15 cm
G. W.	9 Kg/ctn



Model No.	ATT-AMHT12
Frequency	8.2 Mhz/58 Khz
Color	Black/white/Grey or customize
Material	ABS plastic + Magnetic strip
Lock	Three balls clutch, standard super
Dimension	32mmx31mm
Lanyard lenght	10 cm or customize
Packing	1000 pcs/Ctn
Ctn Size	45*30*15 cm
G. W.	9 Kg/ctn

Detacher & Deactivator



Model No.	ATT-AMD11
Color	Dark Grey
Material	ABS plastic
Dimension	12x8.5x6 cm
Packing	1pcs/Ctn
Ctn Size	15*12*10 cm
G. W.	1.5 Kg/ctn



Model No.	ATT-AMD12
Color	Dark Grey
Material	ABS plastic
Dimension	14.5x10x4cm
Packing	1pcs/Ctn
Ctn Size	15*12*10 cm
G. W.	1.5 Kg/ctn



Model No.	ATT-RFD12
Color	Black
Material	Plastic + PcBboard
Dimension	24.5x23.5 cm
Packing	1pcs/Ctn
Decoding height	5 - 20 cm
Ctn Size	59*40*17 cm
G. W.	9 Kg/ctn



Model No.	ATT-RFD13
Color	Black
Material	Plastic + PcBboard
Dimension	24.5x23.5 cm
Packing	1pcs/Ctn
Decoding height	5 - 20 cm
Ctn Size	59*40*17 cm
G. W.	9 Kg/ctn



Model No.	ATT-RFD14
Color	Dark Grey
Material	Plastic + PcBboard
Dimension	24.x20 cm
Packing	1pcs/Ctn
Decoding height	5 - 20 cm
Ctn Size	59*40*17 cm
G. W.	9 Kg/ctn
Applicable label	58 Khz

Other products and customized products available on demand.....